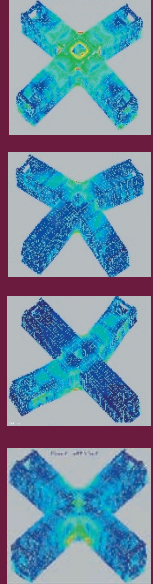
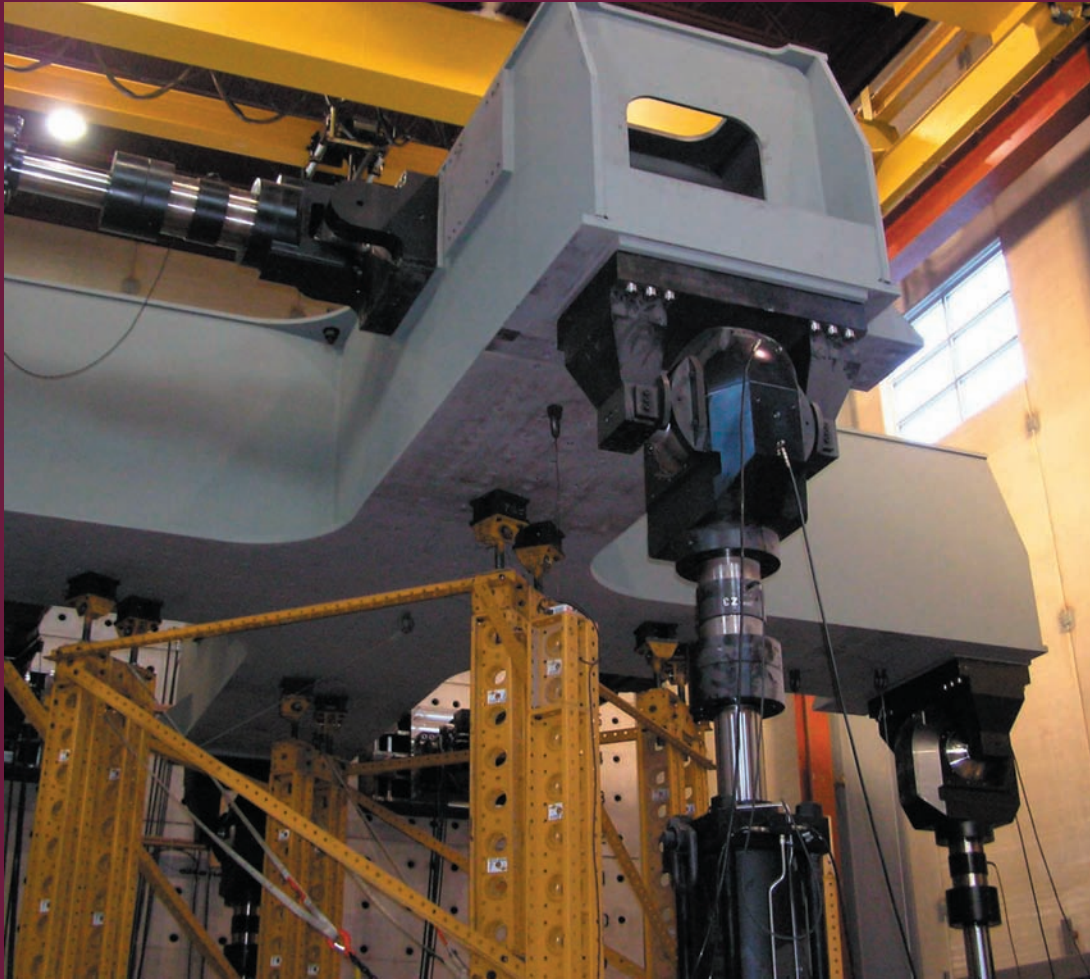


# MAST Crosshead

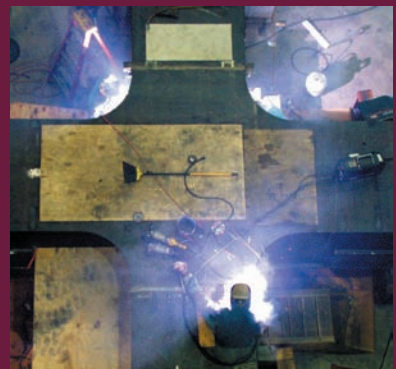
University of Minnesota MAST Laboratory



Above: results of finite element analyses of crosshead deformations by ESI Engineering Inc.

Crosshead technical specifications:  
Box section  
56 x 65 in  
29.3 ft tip to tip  
weight: 94 kips

The crosshead transfers the force and displacements from the actuators to the test specimen. The crosshead was built by LeJeune Steel Co. at their facility in Minneapolis, Minn., brought to the lab in three pieces and assembled into its final cruciform shape. The design was optimized to minimize deflection while keeping the weight below 100,000 pounds.



Crosshead fabricated by LeJeune Steel Co.