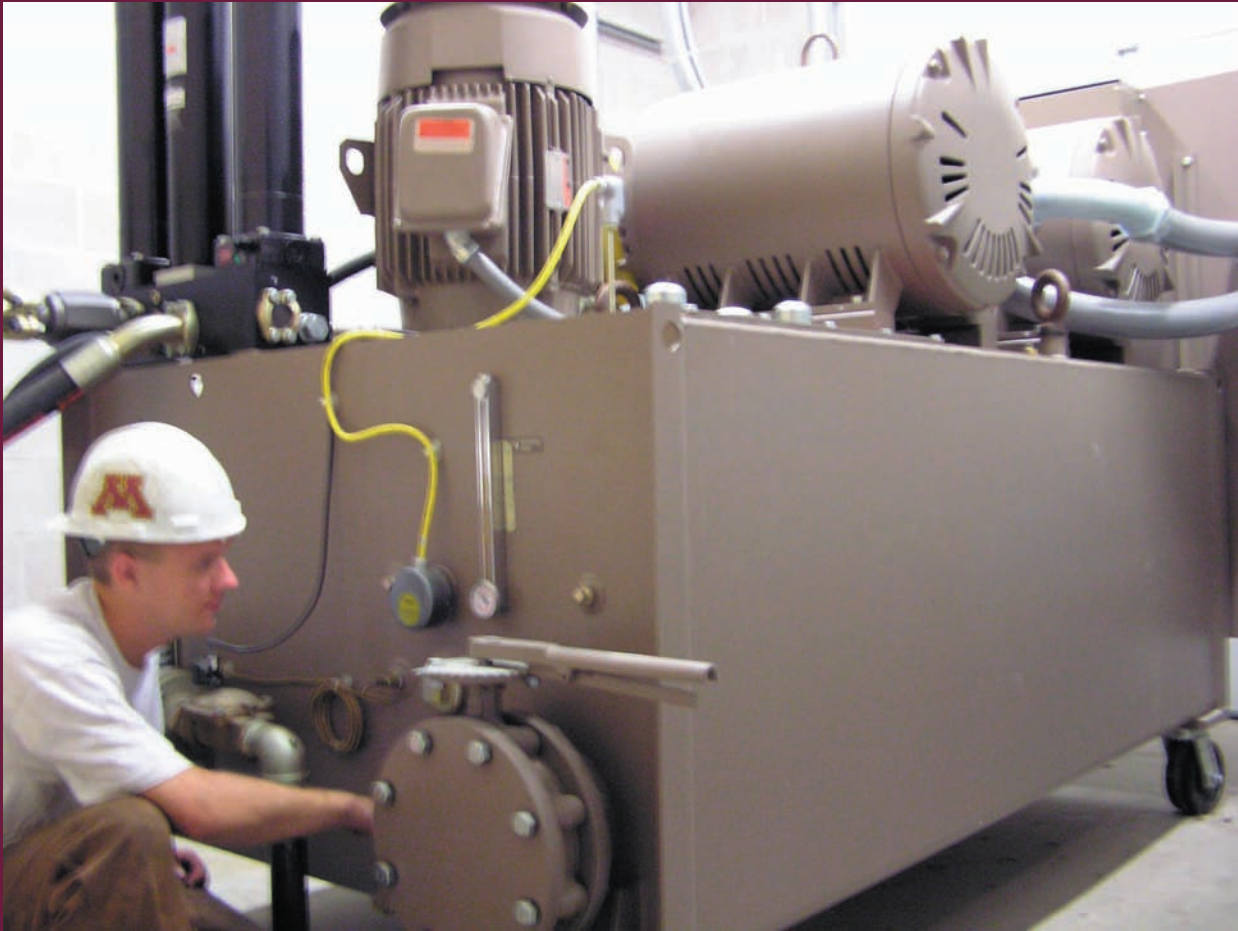
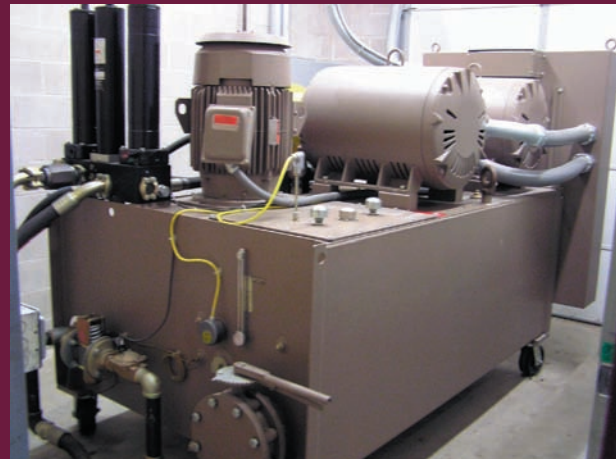
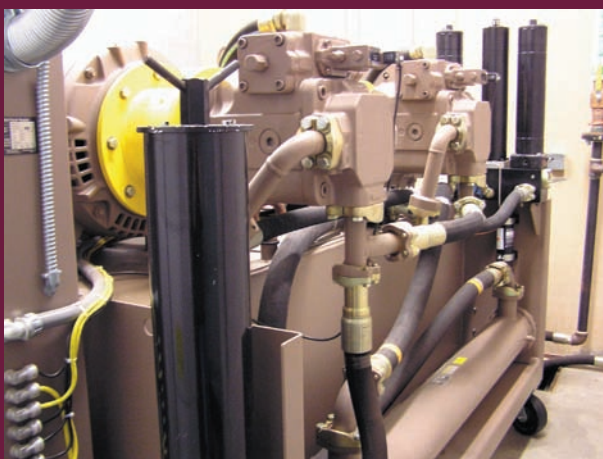


Pump room/Cooling tower

University of Minnesota MAST Laboratory



The pump room houses the pump that powers the hydraulic actuators. Oil flows from tanks in this room into trenches that run alongside the strong floor to the actuators. The cooling tower uses fans and other systems to keep the oil at a constant temperature of 120 degrees, preventing it from overheating.



Pump room specifications: 600 gallons of hydraulic oil and two 200-horsepower engines provide 3,000 psi of oil pressure at 180 gallons a minute.