



MAST Laboratory Safety Training Memorandum

MAST Laboratory Report No. MAST-04-09
MAST-SM-04-02
October 1, 2004

The MAST testing facility is supported in part by the George E. Brown, Jr. Network for Earthquake Engineering Simulation (NEES) Program of the National Science Foundation under Award Number CMS-0086602.

The MAST Laboratory building is funded in part by the University of Minnesota Office of the Vice President for Research, the Institute of Technology, the Department of Civil Engineering, and individual donors.

The MAST Computer Infrastructure is jointly developed by the Department of Civil Engineering, the Department of Computer Science & Engineering, and the Department of Electrical and Computer Engineering.

This publication is also available electronically in PDF format at the MAST Laboratory Web site:

<http://nees.umn.edu/training/Smemo.pdf>

The MAST Laboratory Safety Plan is also available at this site:

<http://nees.umn.edu/training/Splan.pdf>

©2004 Regents of the University of Minnesota. All rights reserved.

The University of Minnesota is committed to the policy that all persons shall have equal access to its programs, facilities, and employment without regard to race, color, creed, religion, national origin, sex, age, marital status, disability, public assistance status, veteran status, or sexual orientation.

Introduction

This memo outlines the policy regarding safety, safety gear, clothing requirements, crane operation, and hydraulic test equipment operation for all personnel working or observing activities in the University of Minnesota MAST Laboratory.

Safety training sessions

Students and employees

The MAST Laboratory requires that all students, employees, and others who will be working for some length of time at the Lab take part in a Lab safety and awareness training session. In this session, the person reviews the contents of the Safety Training Memorandum directly with MAST staff, and then signs the Agreement Statement. The Agreement statement affirms that the person has read the Safety Memo and agrees to abide by its contents.

Visiting researchers and research teams

The MAST Laboratory requires that all visiting researchers and research teams take part in a Lab safety and awareness training session. In this session, the researcher and team review the contents of the Safety Training Memorandum directly with MAST staff, and then each signs the Agreement Statement. The Agreement statement affirms that the person has read the Safety Memo and agrees to abide by its contents.

Potential safety hazards

The MAST Laboratory is active with research projects that are associated with the heavy civil construction industry. In order to accomplish the requirements of a project, a wide range of equipment is utilized to construct and perform experimental tests on various size specimens. This is cause for numerous potential safety hazards. Following the proper safety procedures and wearing the proper safety gear and clothing, can reduce the chance of injury caused by improper use of hydraulic test equipment (MTS Equipment), crane operation, power tools, ladders and scaffolding, or contact with hazardous objects.

A wide variety of equipment and hazardous procedures are necessary to complete tasks in the MAST Laboratory. Experimental research has many potential safety hazards and may include the following:

- Unsafe workers
- Insufficient, cluttered, and/or shared work space
- Hydraulic test equipment:
 - hydraulic actuators and material test frames
 - high-pressure oil
 - high-force testing
 - brittle material testing
 - large scale specimen testing

- Equipment and tools:
 - hand tools
 - welding and torching equipment
 - pneumatic and electric power tools
 - pallet jacks and portable lift equipment
 - ovens
 - concrete and asphalt mixers
- Ladders, scaffolding, boom lifts, and scissor lifts
- Confined spaces
- Working at elevated heights
- Overhead, lattice and hydraulic boom cranes
- Rigging and moving loads
- Chemical and bio-hazards

Safety gear and proper clothing

When working in hazardous surroundings, hard hats, steel-toe boots, work gloves, safety glasses, coveralls or work pants, and sleeved shirts are necessary items. When working in the MAST Lab, these items must be in your possession at all times, and must be worn when involved in the following activities:

- Conducting activities adjacent to personnel operating the crane
- Conducting activities involving the construction, removal, or demolition of a specimen or load frame
- Removing or placing items into storage
- Operating the scissors lift
- Conducting/observing experiments involving hydraulic actuators, screw jacks, or other testing apparatuses capable of generating large forces
- Using any hand tool or power tool

Personal protective equipment requirements (PPE)

- Hearing protection, consisting of earplugs and/or earmuffs, is required when operating equipment that creates loud noises. A dust mask or respirator is required when working in dusty or vaporous conditions. Rubber gloves are available when working with wet concrete and other chemicals. A full face-shield is required when grinding.
- Hard hats, safety glasses, steel-toe rubber boots, steel shoe coverings, foam inserts for hearing protection, dust masks, and rubber gloves are available in the MAST

Lab. Please see Steve Olson if you cannot locate these items or if replacement items need to be ordered.

- When using welding or torching equipment, an approved upper-body leather jacket must be worn with leather welding gloves to prevent burns, and ear-plugs must be used to prevent sparks from entering your ear-cannel. When torching you must use tinted goggles or face shield, and when welding, you must wear a full-face welding helmet. You must be pre-qualified by Steve Olson to use the welding equipment.
- It is your responsibility to purchase steel-toe boots.
Steel-toe boots are available at most shoe stores, and range in price from under \$50 to over \$150. Safety toed shoes are required in the MAST lab and shall have, at a minimum, an impact rating of 50 and a compression rating of 50.
- Each student or employee who works in the lab will be issued a pair of work gloves and safety glasses. When the gloves are worn out, you may exchange them for a new pair.
- When a project requires work at heights above six feet, fall protection equipment must be worn and affixed to a secure tie-off point. Fall-protection gear consists of a full-body harness and a lanyard. Please see Steve Olson for this equipment and information regarding proper tie-off.
- Shorts, skirts, dresses, tank tops, and open-toe (sandals) and high-heel shoes are not considered proper apparel in the MAST Laboratory at any time. A limited number of lockers are available in the Lab for people interested in storing work clothes. Contact Steve Olson for locker space.

Crane operation

Only permanent MAST personnel may operate the crane.

Scissors lift and fork lift

Only permanent MAST personnel may operate the scissors and fork lifts.

Hydraulic testing equipment

Only permanent MAST personnel may operate the hydraulic testing equipment.

Chemical safety

Minnesota Employee Right to Know Act, MERTKA, requires special training for employees who work in hazardous conditions and with hazardous substances (chemicals, bio-hazards, etc...). This training is required for all employees of the University of Minnesota and if you have not had this training please see Steve Olson to arrange a training session.

Copies of the Department of Civil Engineering Chemical Hygiene Plan, which contains procedures for the handling and storage of chemicals, and information about what hazards might exist with the chemical you are using, are available in room 242, CE Machine Shop, and the Environmental Library on the 6th floor (L-Room). Chemical spill kits are available on the 6th and 7th floor. You may also obtain general

information concerning hazardous chemicals at www.dehs.umn.edu (Department of Environmental Health and Safety).

Work Plan Information

Before any lab work can be performed, a work plan must be completed and then approved by Steve Olson. Student work plans must also be approved by the Advisor(s).

The work plan shall include a list of tasks, specimen and load frame drawings, calculations, schedule, list of equipment and personnel to carry out the work tasks, instrumentation plan, rigging plan, and space requirements

General Lab rules

Number one rule

- Do not be afraid to ask questions. We are here to assist you.

The following rules apply:

- Do not step on or set equipment or debris on any signal or actuator controller cable.**

Damage that is not visible may occur in the cable. Please cover all cables that are on the floor with angle or channel sections.

- Never use your finger to align boltholes.**

When you are erecting objects that require aligning boltholes of two separate components, always use a spud wrench or drift pin.

- You must keep your work area clean and free of debris.**

- Never place any part of your body in an area that is considered a crush point.**

Crush points include areas adjacent to all hydraulic equipment, rigging components, lifting equipment, pallet jacks, etc.

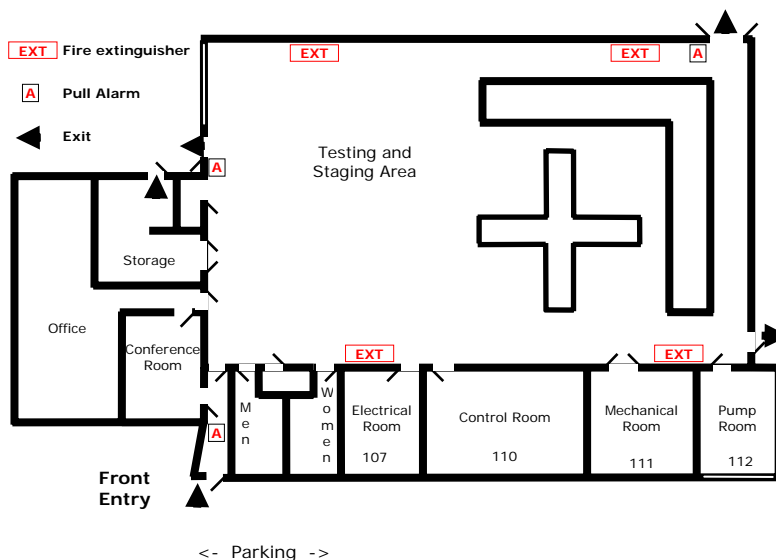
- If you break or notice any defects in the equipment you are using, immediately inform Steve Olson. This ensures that you will not be held responsible for repairing the equipment.

- Do not leave tools on load frames or specimens, and at the end of the day put all tools back where they belong.

- Before planning to work after hours at night or on weekends in the MAST Lab, you must first get permission from Steve Olson to do so. If you do get permission to work after hours, you must always have a second person present.

- You are prohibited from entering the MAST Lab, operating any equipment, or conducting any physical work if you have taken cold or flu medication (over-the-counter or prescription), pain medication, or you are under the influence of mood altering substances (drugs, alcohol, etc.).

- If you have a medical or physical condition that prevents you from doing certain tasks, please inform Steve Olson so other arrangements can be made. This information will be kept private.
- If you are taking medication(s) prescribed by a doctor, please inform Steve Olson and provide a note from the doctor stating what physical activities you can and cannot perform. This information will be kept private.
- On objects that have the potential to impale someone, for example, rebar sticking out of concrete, place a piece of Styrofoam or plastic cap on the end of the bar.
- Please visit www.osha.gov, www.msha.gov, and www.dehs.umn.edu for additional safety information that may be specific to your needs.
- Work methodically and at a steady pace, and do not be afraid to ask your fellow students to assist you. UGRAs are available, and you should schedule their services prior to undertaking any major activities.
- When you will invite visitors/volunteers to work or watch tests, file a “Release of Liability” form with Steve Olson.
- All electrical cords must be protected and removed from aisle/walkways on a daily basis. If the electrical cord is cut or broken, do not repair it. Throw away any cut or broken electrical cord. Use a properly rated electrical cord for the equipment you are using. An underrated electrical cord is a safety and fire hazard.
- Know the location of all fire extinguishers (shown in floor plan below). If you use one, inform Steve Olson immediately so the fire extinguisher can be refilled.



In case of injury

- All injuries must be reported.**

If you are a University employee, file an employee incident report. Fill one out, and have your supervisor sign it and FAX it to the University Workmans' Compensation Department.

Policy violations

Students and employees

For students not adhering to this policy, the following shall apply.

- First offense - verbal or email reminder.
- Second offense – email or written notification of violation(s) to Advisor(s).
- Third offense – suspension of work and a mandatory safety review.
Penalty to conduct safety review will be charged to your project.

Visiting researchers and research teams

For visiting researchers, research teams, or team individuals who do not adhere to the Lab safety policy, the following shall apply.

- First offense – the Operations Manager reviews the situation with the involved individual and/or team.
- Second offense – the Operations Manager makes a verbal or written report to the Principal Investigator.
- Third offense – the Operations Manager sends written notification of violation(s) to the Principal Investigator, to the University Department of Civil Engineering, and, if a NEES project, to the NEES Consortium.

Agreement Statement

I, _____, have read the MAST Laboratory
Safety Training Memorandum dated October 1, 2004.

I fully understand its content and agree to abide by it.

Signature: _____ Date: _____